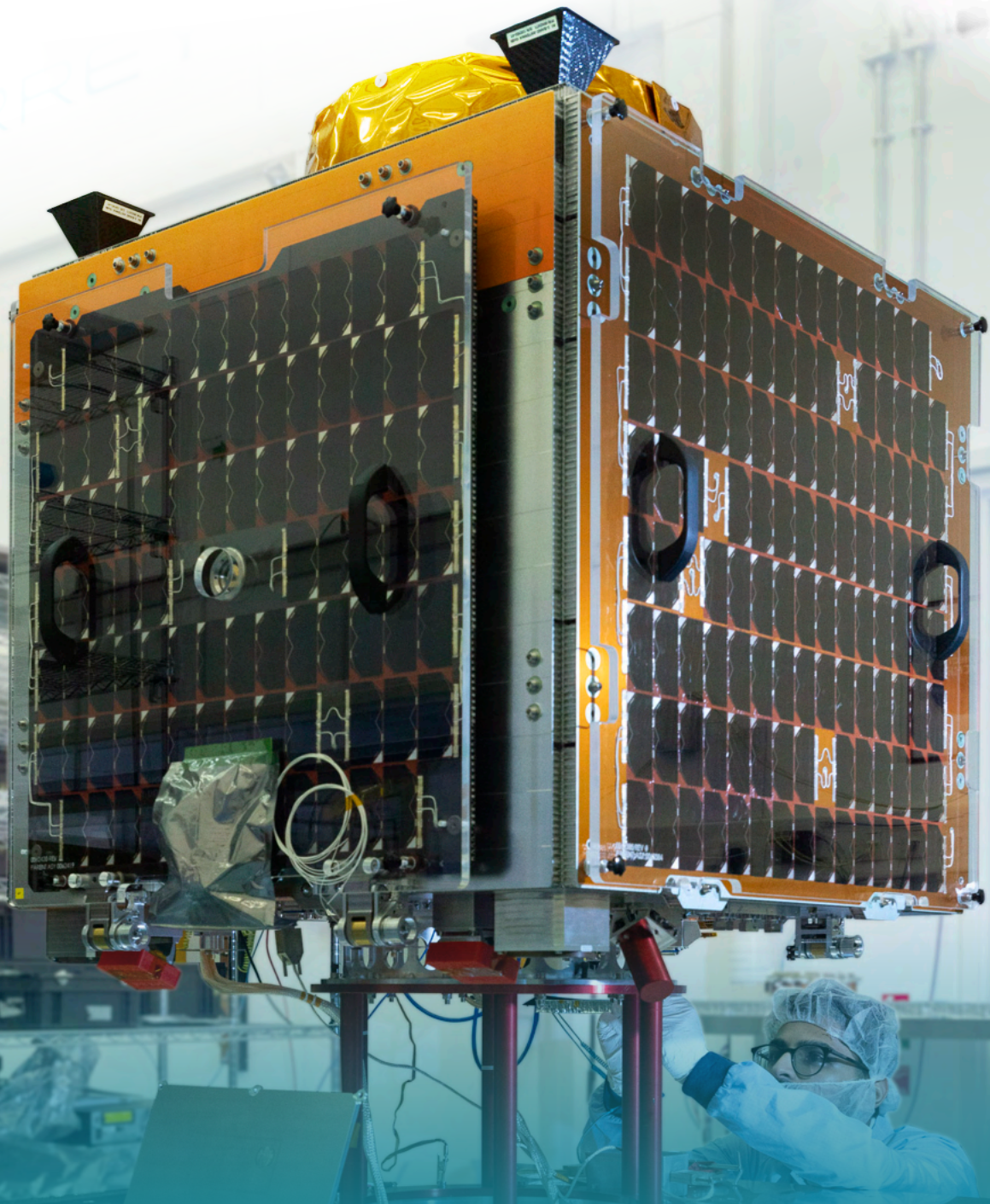


THE WORLD'S LEADING SMALL SATELLITE MANUFACTURER

Enabling operational advantage from space



Cyber Essentials Plus | ISO/IEC 27001 | ISO 9001 | ISO 14001



@surreysat



company>sstl



sstl.co.uk

Surrey Satellite Technology Ltd (SSTL) has over 40 years' experience delivering products and services that enable **operational advantage** from space:

Protect and Defend

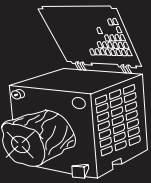
SSTL has a range of SDA payloads and experience in building SSA/SDA platforms (e.g. SAPPHIRE)

Enhance Military Operations

SSTL has extensive experience in the design, manufacture, test and operation of EO/ISR spacecraft and payloads

Upskill and Cohere

SSTL offers assured and customised training solutions covering the full mission life cycle from concept to operation

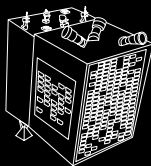
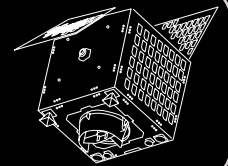


CARBONITE+

is a high resolution optical imaging satellite with a sub-1m GSD and 5km x 5km swath. Forward Motion Compensation (FMC) allows for up to 120 seconds of video of a single target.

DARKCARB

is a high resolution thermal imaging satellite with a novel mid wave infra-red (MWIR) imager offering a 3.5m GSD resolution.

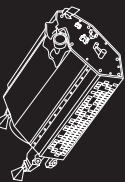
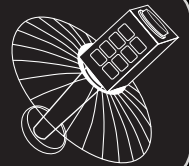


WIDE SWATH

offers 1m GSD optical imagery over a very wide area with a 100km swath. It is ideally suited to wide area surveillance, change detection and mapping applications.

CARBSAR

is a high resolution X-band Synthetic Aperture Radar (SAR) spacecraft offering day and night, all weather, imaging capability. The satellite has spotlight and stripmap modes with up to 0.5m GSD.

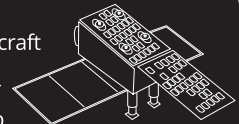


PRECISION

is SSTL's very high performance, high agility, optical imagery satellite offering a 0.5m GSD resolution. The satellite offers a range of imaging modes including: spot, stripmap, area, along track stereo and across track stereo.

NOVASAR-X

is SSTL's high performance SAR spacecraft offering day and night, all weather imaging capability across a variety of modes, including: spotlight, stripmap, ScanSAR and wide area maritime surveillance.



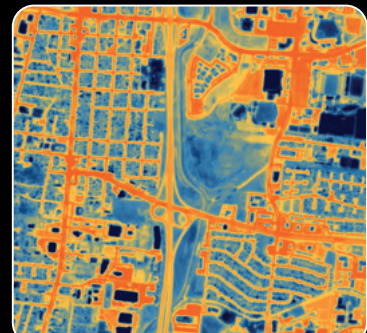
SSTL's satellites can be tailored to SDA applications. SSTL also provides integrated ground segments, data encryption, inter-satellite links and onboard processing capabilities.



Synthetic Aperture Radar Imaging



Optical Imaging
(Multispectral / Hyperspectral)



Thermal Imaging